

STRAIGHTLINE PERFORMANCE

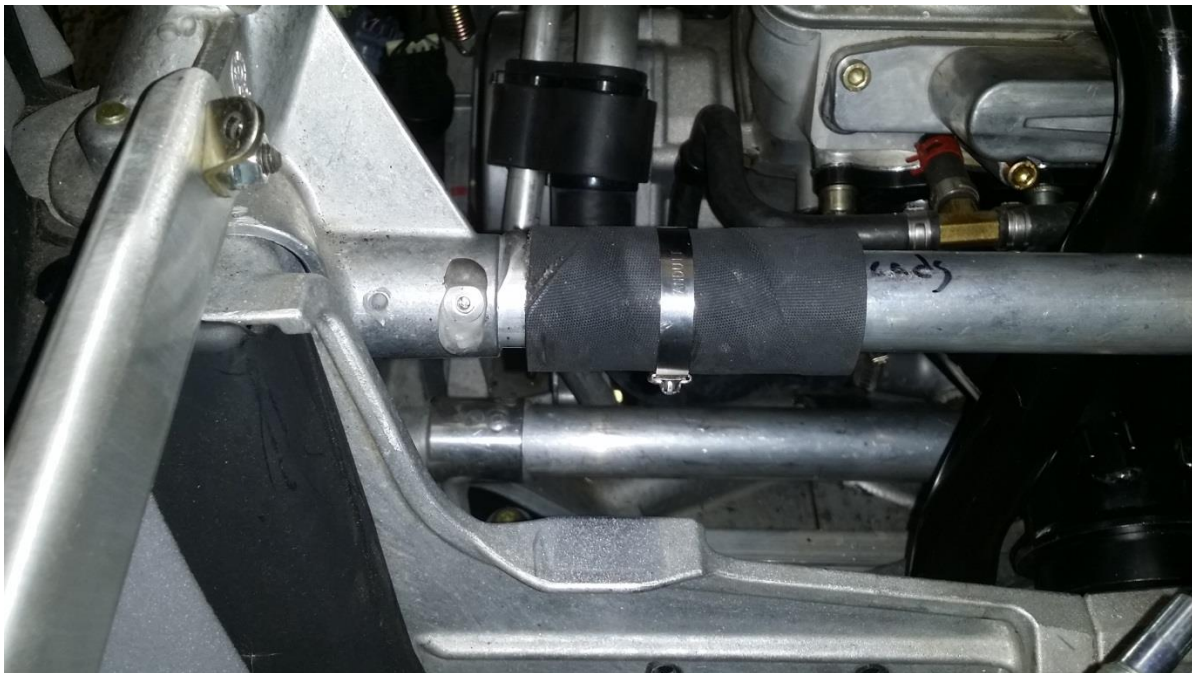
Polaris 850 AXYS ULTRA LITE STAINLESS MUFFLER (132-142)

Installation Instructions and “Bill of Materials”

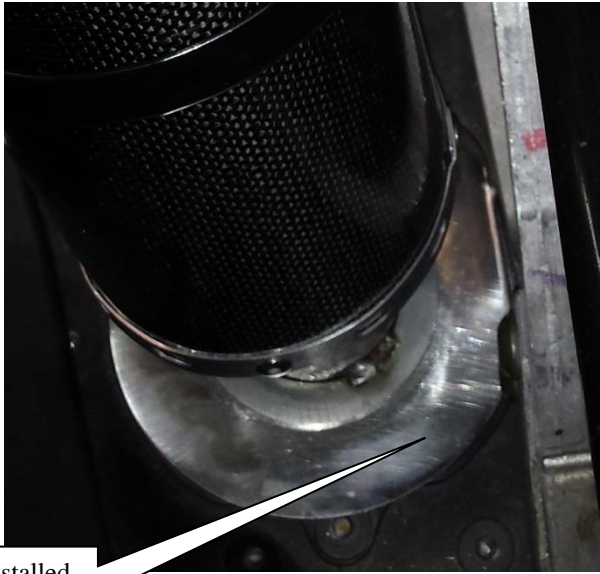
1. Remove stock muffler completely. Be sure to not lose any springs.
2. Install supplied base plate into stock outlet hole in bottom of belly pan with outlet side down. The flat bent edge will go up against the chassis as shown in picture.



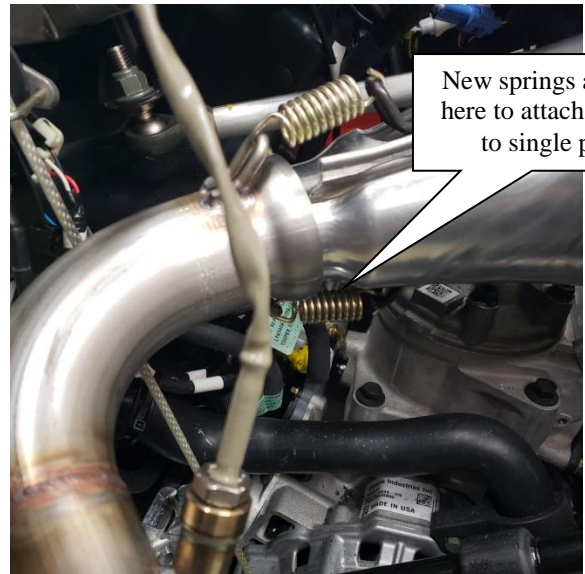
3. Remove the stock pipe. Install the 3” piece of hose around the main cross tube just above were the stock resting location is for the pipe (see Below). Use the supplied quick tighten clamp to secure the hose to the brace. This is used for the pipe to rest against and ensure that the pipe brace will not hit the chassis.



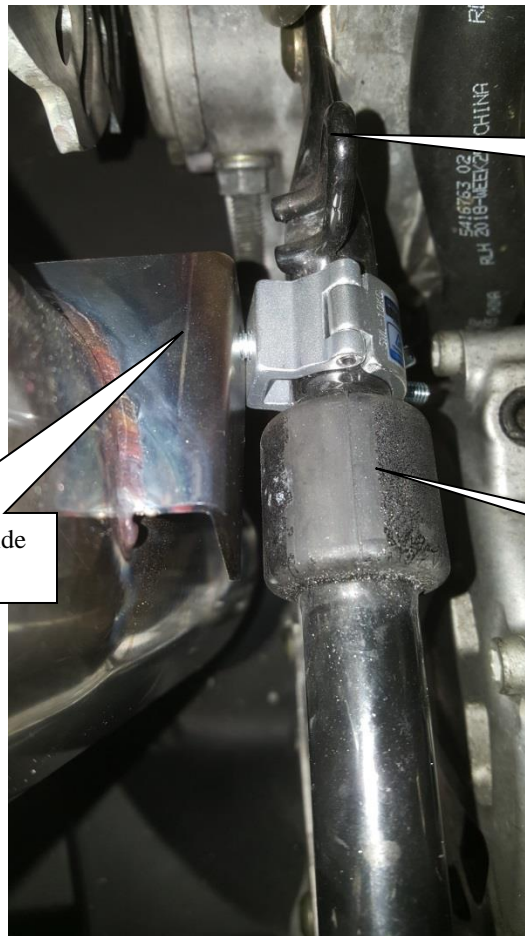
4. Install Single pipe back in machine starting with Y-pipe/ head pipe springs.
5. Install Straightline Ultra Lite Muffler into base plate and spring the muffler to the tail of the single pipe.
6. Mount mini clamp around the chassis between the spring hook and rubber mount as shown below.



Base Plate installed with flat area against chassis.



New springs are used here to attach muffler to single pipe.

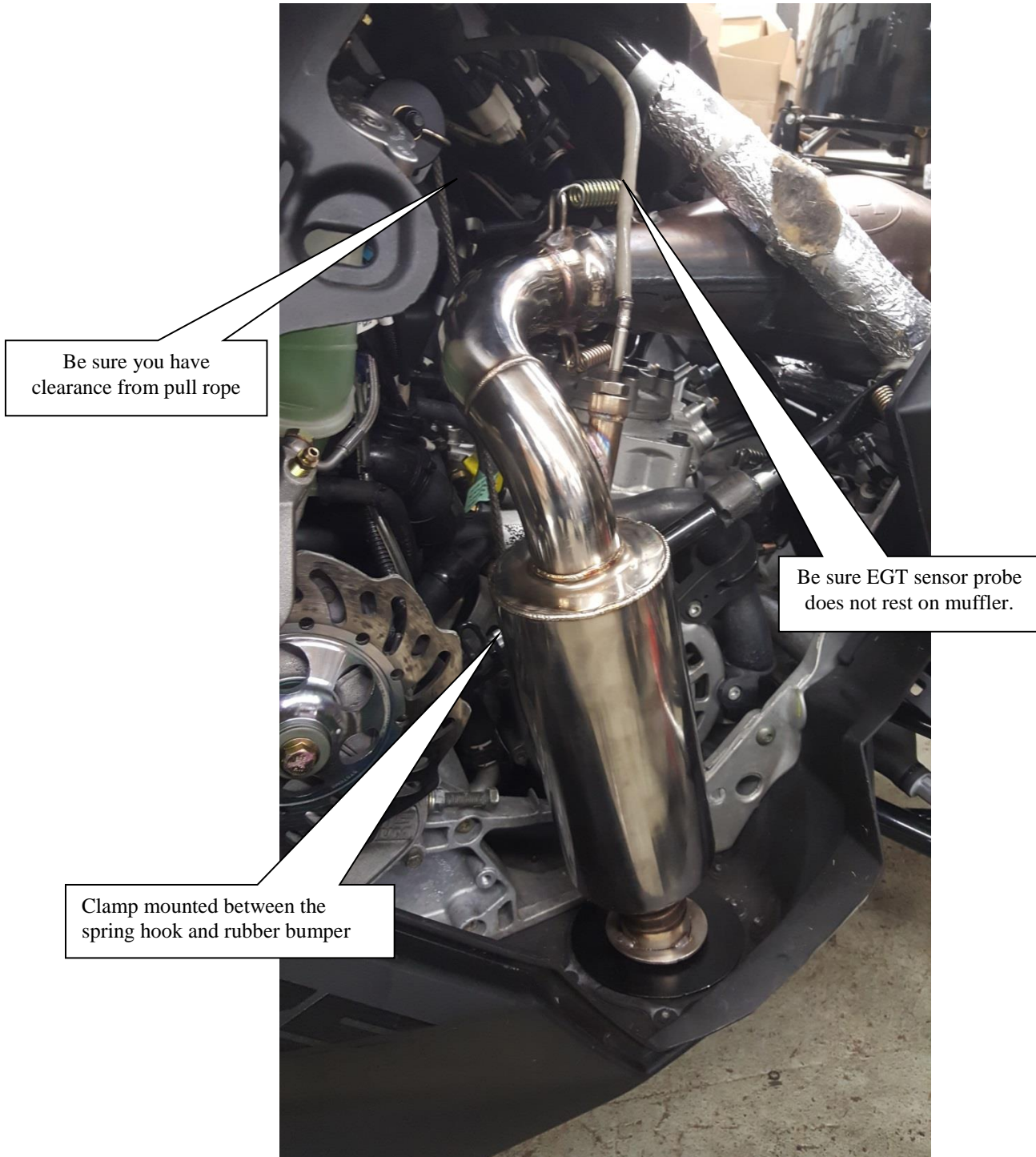


Stock spring mount by chain case.

Install lock nut on inside of brace and tighten

Rubber Bumper

7. Orientate and clamp in a natural position and install into the muffler brace as shown on the previous page. Lightly install all the bolts then tighten all the bolts to ensure they all go in.



- **Be sure the muffler has no manufacture defects. If the muffler has been run/used there are no warranties for fitment.**

- Jetting Requirements- No Jetting Required
- Clutching Requirements-No Clutching Required

Technical Question Please Email Tech@straightlineperformance.com

: Bill of Materials (BOM)

| Qty | Part Number | Description | In Box |
|-----|-----------------------|-------------------|--------|
| 1 | Mini 360 F14 CJS2001 | Quick Mini Clamp | |
| 1 | 11510038 | Lock Nut | |
| 1 | IT-132-127 Strap | Quick Strap Clamp | |
| 1 | IT-132-127 Base Plate | Base Plate | |
| 1 | IT-132-127 Hose | 3" Hose | |
| 1 | | Sticker | |
| 1 | | Instructions | |

Checked By:



Facebook @ straightlineperformanceinc1

Youtube @ straightlineperfinc

Twitter @ straightlineperf