

# STRAIGHTLINE PERFORMANCE

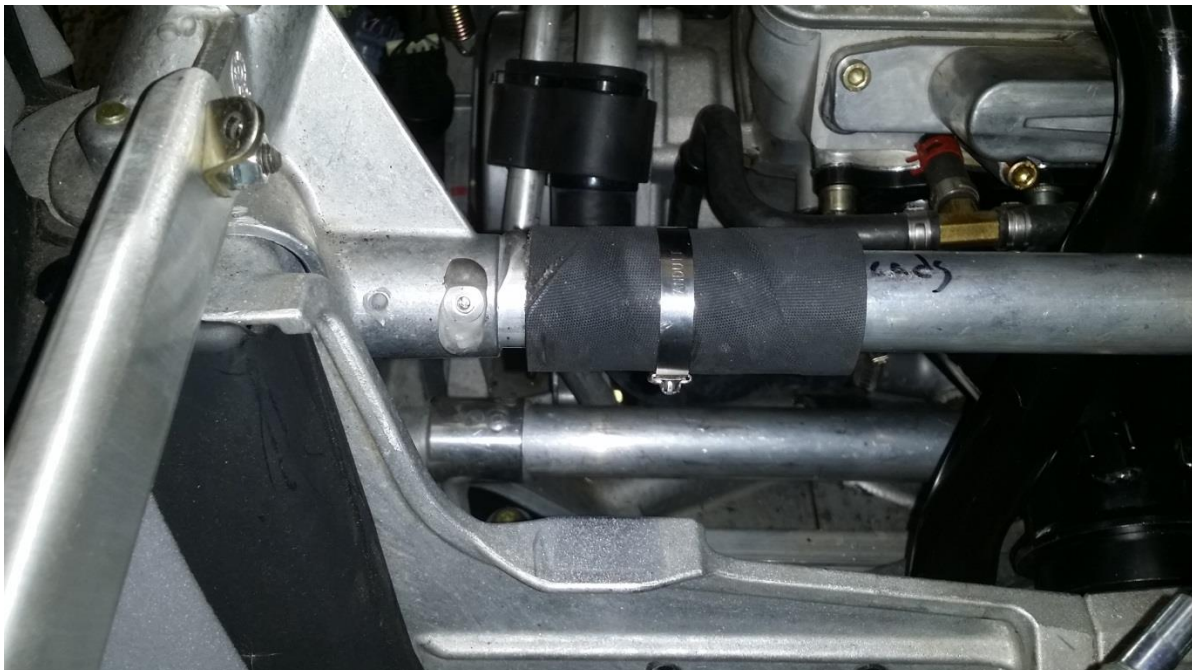
## 2015-18 Polaris 800 AXYS Ultra Lite Muffler (132-143)

### Installation Instructions and “Bill of Materials”

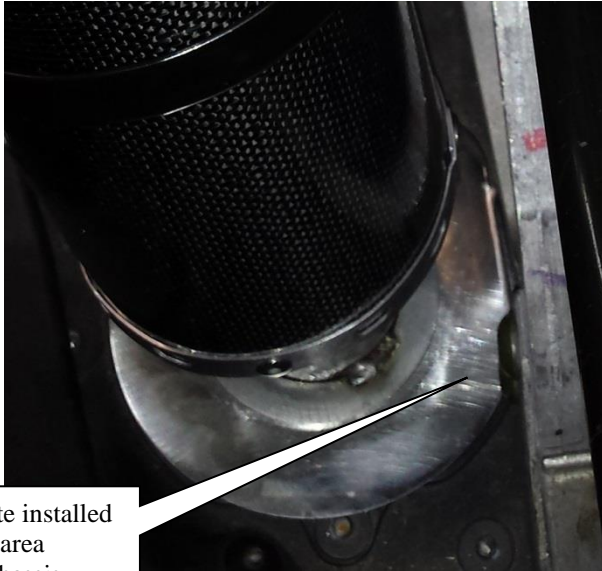
1. Remove stock muffler completely. Be sure to not lose any springs.
2. Install supplied base plate into stock outlet hole in bottom of belly pan with outlet side down. The flat bent edge will go up against the chassis as shown in picture.



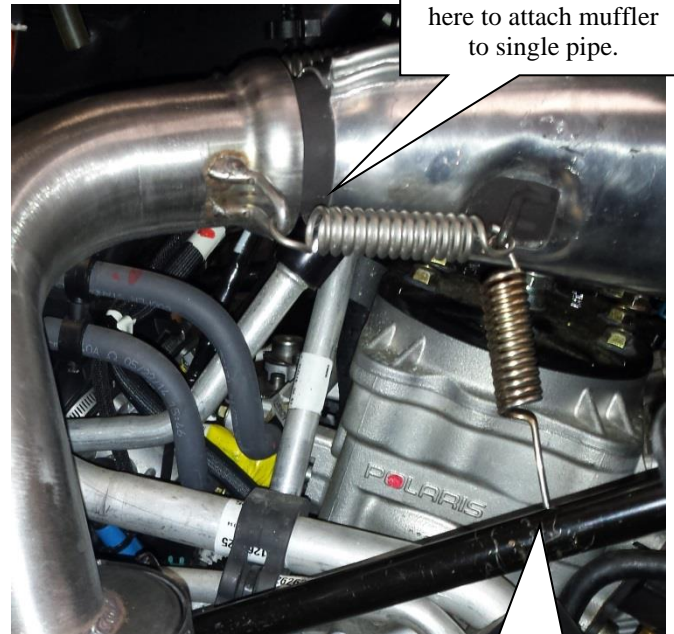
3. Remove the stock pipe. Install the 3” piece of hose around the main cross tube just above where the stock resting location is for the pipe (Cut the hose down the 3” length to install -see Below). Use the supplied quick tighten clamp to secure the hose to the brace. This is used for the pipe to rest against and ensure that the pipe brace will not hit the chassis.



4. Install Single pipe back in machine starting with y-pipe/ head pipe springs
5. Install Straightline Ultra Lite Muffler into base plate and spring the muffler to the tail of the single pipe using new supplied springs.
6. Use the stock spring with the large hook to wrap around the main brace and up the stock pipe spring tab holder on pipe as shown below.

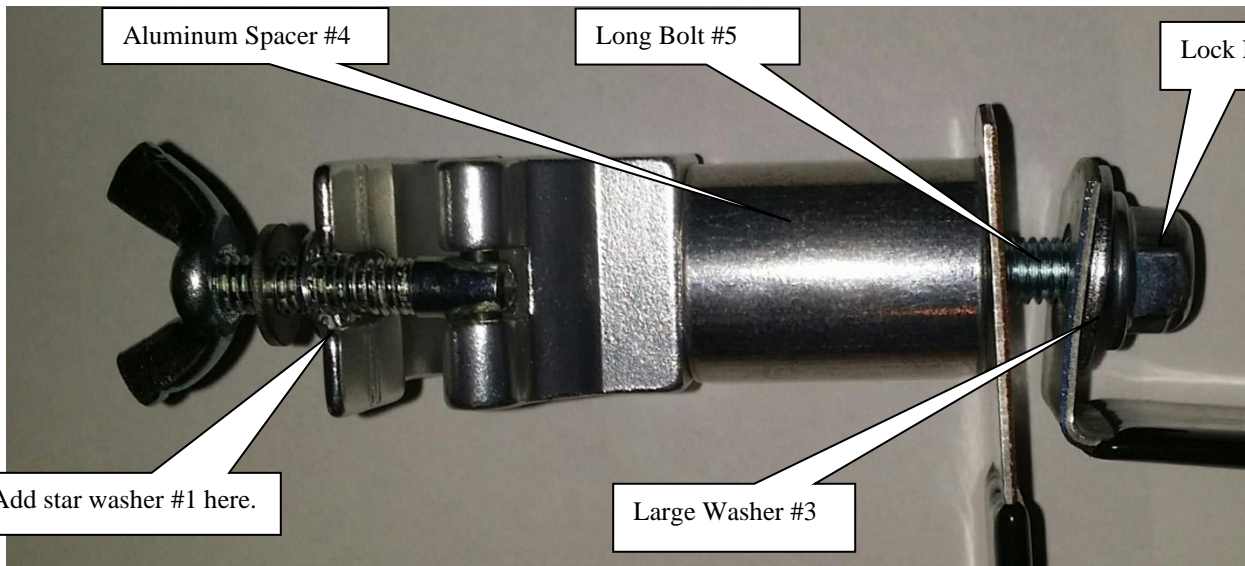


Base Plate installed with flat area against chassis.



New springs are used here to attach muffler to single pipe.

Stock spring mounted onto pipe and chassis mount.



Aluminum Spacer #4

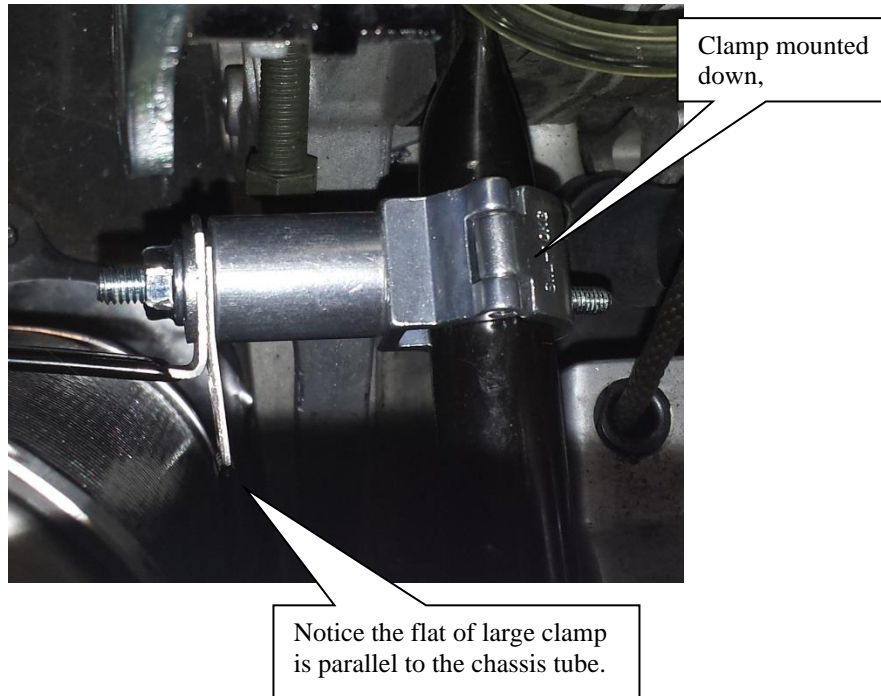
Long Bolt #5

Lock Nut #2

Add star washer #1 here.

Large Washer #3

7. Use large clamp to warp around the muffler and bolt on as shown above. Be sure to use the correct parts as shown in the diagrams above. Mount the small clamp in a down position.
8. Orientate and clamp in a natural position and tighten the bolt that goes thought the entire assembly.
9. Bolt the small clamp around the frame as shown on the next page. Tighten the small clamp, do not over tighten.



- **Be sure the muffler has no manufacture defects. If the muffler has been run/used there are no warranties for fitment.**
- Jetting Requirements- No Jetting Required
- Clutching Requirements-No Clutching Required
- Pictures shown are of a Carbon Fiber / Mounting is identical.

: Bill of Materials (BOM)

Qty	Part Number	Description	In Box
1	AS75-14-64	Aluminum Spacer	
1	Mini 360 F14 CJS2001	Quick Mini Clamp	
1	11510038	Lock Nut	
1	1138403	Washer	
1	1133709	Star Lock Nut	
2	415107100	Springs	
1	708846	4" Mounting Clamp (without rubber sleeve)	
1	IT-132-127 Base Plate	Base Plate	
1	0153968	Bolt	
1	IT-132-127 Hose	3" Hose	
1	IT-132-127 Strap	Quick Strap Clamp	
1		Sticker	
1		Instructions	

Checked By:	
-------------	--



**Facebook @ straightlineperformanceinc1**  
**Youtube @ straightlineperfinc**  
**Twitter @ straightlineperf**