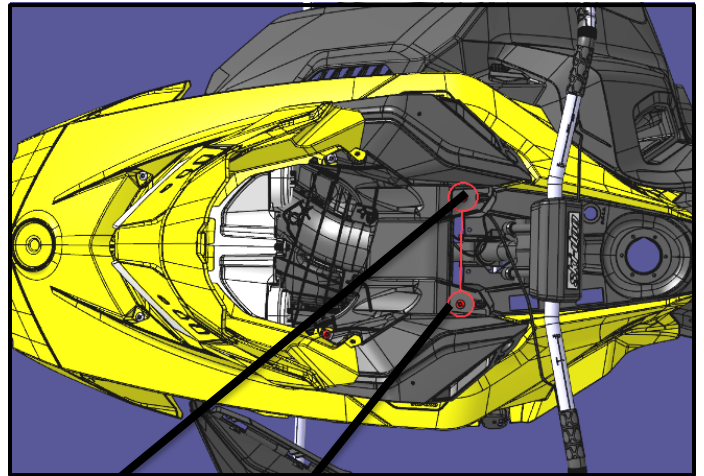
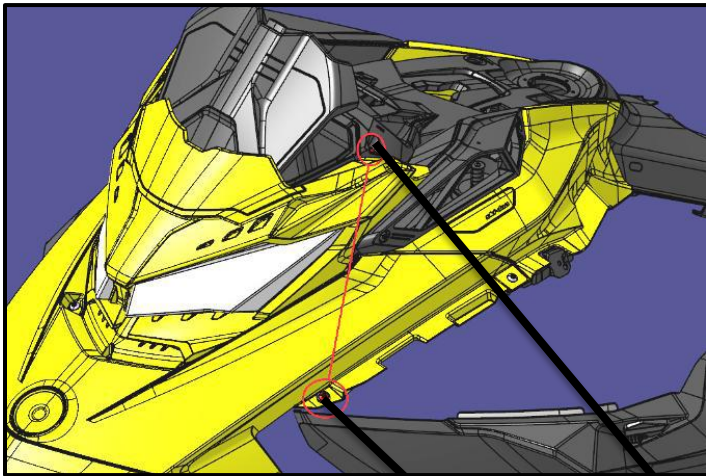


STRAIGHTLINE **PERFORMANCE**

Skidoo LED Re-Mix Light Kit Instructions and BOM (141-103)

Complete Ski-doo Gen 4 LED Light Installation

1. Remove the hood, and first remove the 4 screws that hold the hood onto chassis.
 - a. Remove the side mounted screw and the upper mounts show on the left picture, previous page. There will be one on each side.
 - b. Next remove the 2 screws that are under the storage compartment, previous page right picture.
 - c. Un Screw the air box from the hood assembly as shown above.
 - d. Lastly, unplug the head lights, MAP sensor, and gauge cluster. Then remove hood.

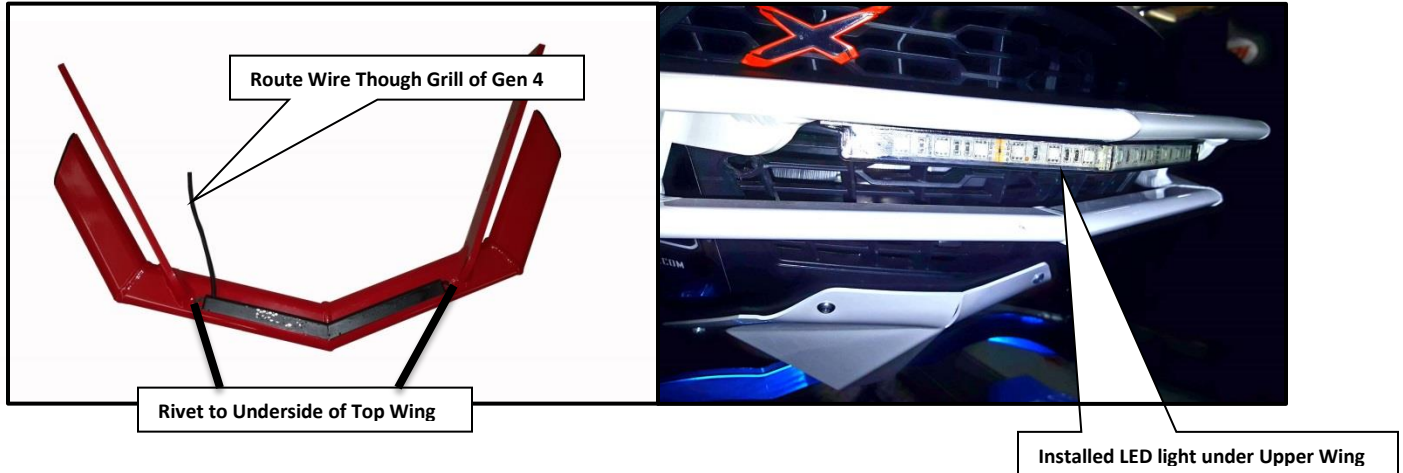


Screws to be removed.

Air box clamp to Unscrew



LED Light Mounting - Straightline Bumper and Ski-doo Front Grill Mounting.



Mounting of LED Light to Straightline Bumper

1. Remove the Straightline Upper Bumper Wing and flip upside down if previously installed on machine. If this is newly purchased, and uninstalled bumper this LED light can be installed before installing the bumper.
2. Set the light on the **underside** of the bumper in-between the mounts as shown on the above page. Set the LED light back enough so that the entire LED light is on the flat surface of the bumper.
3. Mark the holes, drill and rivet to the bottom of the bumper (the bumper is hollow please be sure not to drill through both sides).
4. Install bumper, and run wires as shown in next steps.

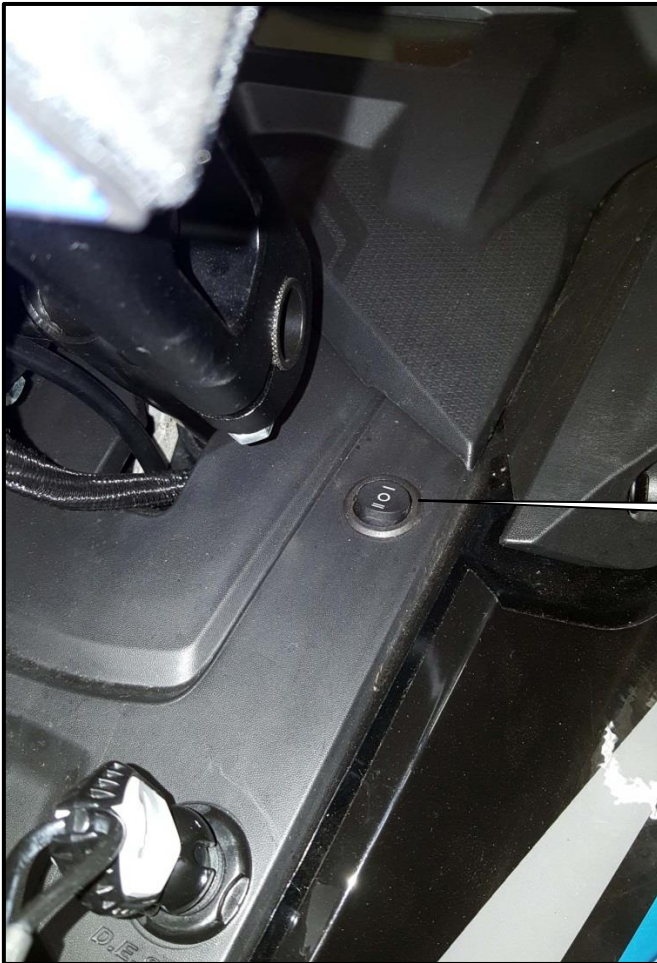
Mounting of LED Light to Nose Cone of Gen 4

1. Set the LED light in the front of the Gen 4 nose cone as shown below.
2. Mark the rivet holes, remove light and drill out. Rivet LED light and run wires as shown in next steps.



Mounting the LED light switch

1. Mount the LED light switch on the right hand side of the console just forward of the DESS key.
2. Drill a 3/4" hole and feed the LED light harness through the hole connect on/off switch back up in the same manner it was disconnected (Middle wire is labeled). Be sure to push down as it will lock on the plastic.
3. The LED switch has a marking with 1 hash on one side and 2 hashes on the other side. **Install the 1 hash mark forward. This is the standard setting when pushed to turn on LED lights when sled is running.**
4. By purchasing the accessory 12V harness you can leave the light on when the unit is off for accessory lighting.
Part number 145-100.



LED Button Installed.

Wiring the LED Harness

- 1 With the Hood removed, route and zip tie wires as shown below.
- 2 Be sure to not have any wires or zip ties close to the exhaust.
- 3 See the Routing of the wiring - White Line on next page.



This end goes into the Skidoo
Accessory plug

This end goes into the wire harness

Route the wire under the frame
the entire way up to the switch.
Be sure to zip tie the harness so it
can't move.



Plugging into the Ski-doo Accessories Plug-in.

1. The Plug in under the left hand side of the counsel. Pull out of the holder and plug into either of the double plug side of the Straightline wire harness. The other can be used for any other accessory or just simply plug back into the holder until needed.

BOM:

Quantity	Part #	Descriptions	In Box
1	141-105-Harn	Skidoo LED harness	
1	145-100-RGBLED	Complete Colored LED V-Bar	
4	NP-209	6" ZIP TIE	
2	41024	3/16 Rivet	
1	145-107	Wireless Key Fob Controller	
1		Key Fob Instructions	
1		Sticker	

Checked and Packaged By

Technical questions please email tech@straightlineperformance.com