

STRAIGHTLINE **PERFORMANCE**

www.straightlineperformance.com

2011-17 BRP Can-Am Commander 800/1000 Slip-on Dual Exhaust (242-115)

Straightline Performance's BRP Commander 800/1000 exhaust should be installed by a professional service installation center. Certified BRP dealers and Straightline certified performance centers are recommended for install and set-up. Straightline recommends the installation of a Dynojet Power commander PCV for optimum performance. (part number 25-008) Email tech@straightlineperformance.com for fuel programming maps, or check online at www.straightlineperformance.com.

Step 1. Rear plate and muffler removal.

Removal of the bed is not required but extremely recommended to ease the installation of the dual exhaust. First remove the rear plate that encloses the stock muffler. There are 4 bolts to remove this, 2 on the top and 2 on the sides. You will not be reinstalling the plate or hardware for the dual SPI muffler installation.



#1



#2

Remove and unbolt the stock muffler and un spring the stock springs holding the muffler assembly on.
Remove the 2 stock bolts holding the muffler onto the rear frame.



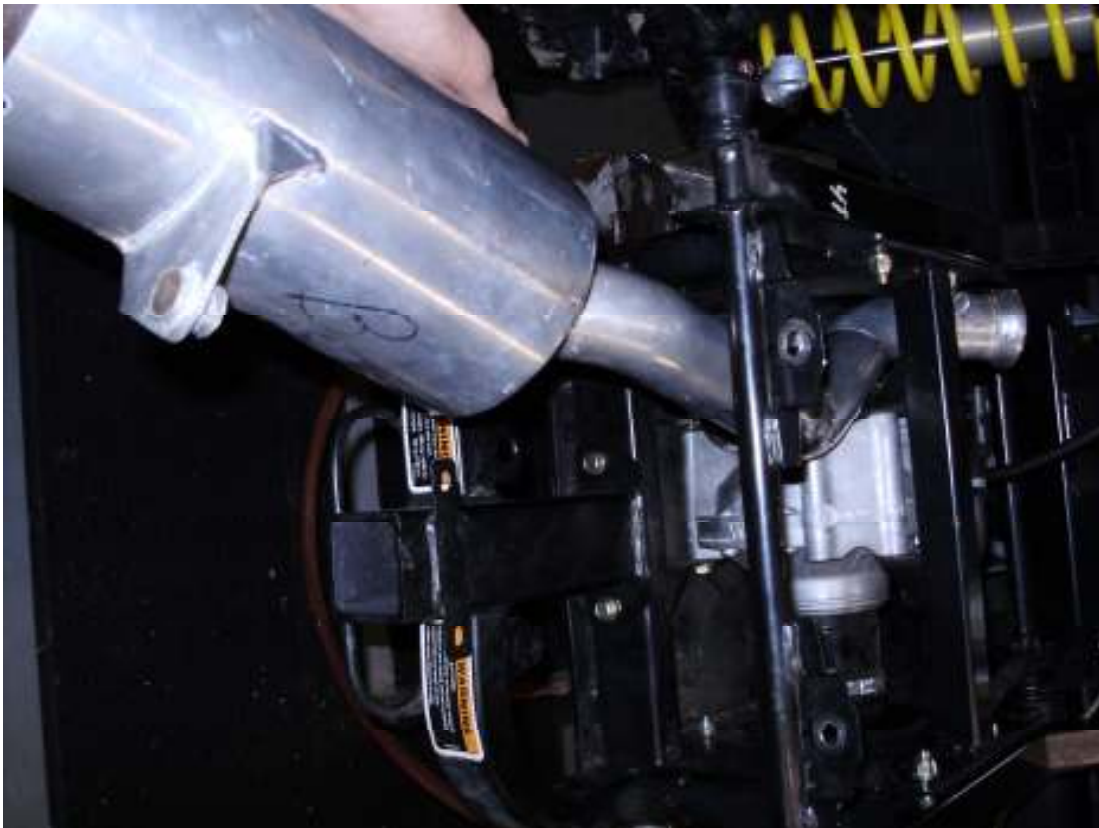
#3

Remove the 4 springs shown at right of picture and remove muffler.

Step 2. Removal of the center section.

The center section can be removed by un springing both sets of springs were the center section joins the head pipe. There is a rubber grommet that supports the center section. It can be removed, and will not be used for the new SPI dual system.

Step 3. SPI Dual Pipe Installation.



#4

Install the driver side muffler assembly first, marked with and “dot”. As shown in picture #4, insert the head pipe of the muffler under the main frame with the hanging tab at a 3 o’clock orientation. Begin to move in and turn clockwise until the head pipe is in contact with the graphoil on the head pipe. Spring the head pipe onto the SPI driver’s side exhaust at this time. Last, lift the bracket up to the factory mount and install mounting bolts as shown in picture #5. Leave loose until assembly is completed.



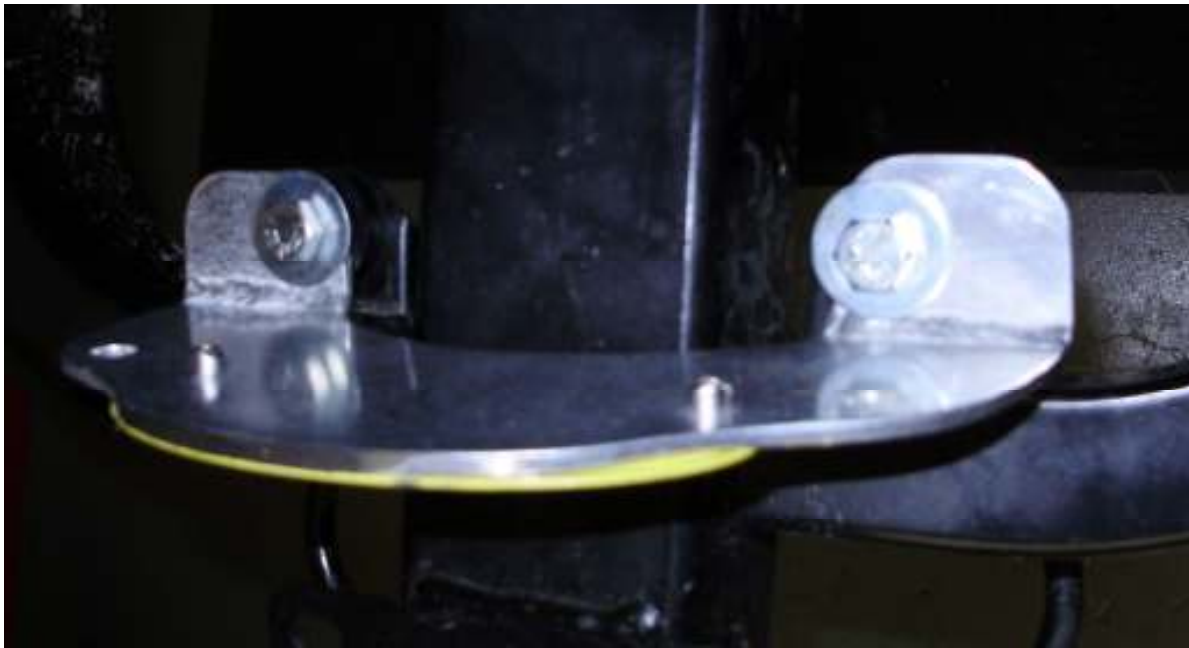
#5

One washer will go over the shoulder bolt, one in-between the housing and frame (must use the black 5/16 hardened washer here) and the last on the outside of frame.

The passenger side muffler can be installed directly in with no issues. The head pipe may have to be loosened and lined up with SPI exhaust. Spring and mount the other SPI muffler. Leave loose until complete assembly.

Step 4. Dual exhaust base mount.

Install the base mount onto the 2 factory grommet holes just under the mufflers. Be sure to have the stock grommets in place before bolting. Install a washer on both the top mount and bottom of grommet, in picture #6.



#6

Base plate installed with bolts onto factory grommets



#7

Mounting holes for both mufflers.



#8

Mufflers shown bolted onto base plate (picture #8)

Step 5. Mount base plate to mufflers.

In picture #6 notice the 2 mounting holes, bolt the mufflers onto these. At this point you can tighten all mounting brackets. Final assembly shown in picture #8

Step 6. Zip Tie Hose and Wires

Be sure to zip tie the main hose and wires running to by the frame, these need to be **under** the frame to clear the box during closing.



#9

Use the supplied zip ties to tie off hose and wires on drivers side frame next to the shock.

STRAIGHTLINE ***PERFORMANCE***

www.straightlineperformance.com



Straightline Can-Am Commander 800/1000 Bill of Materials
Part Number (242-115)

Quantity	Item #	Descriptions	In Box
2	1126331	3/8 X 1 Strip Bolt	
4	1133213	5/16" X 1.000" Washer	
4	NP-166	5/16-18 Nylock Nut	
6	NP-165	5/16 Washer	
2	NP-164	5/16-18 X 3/4 Long Bolt	
2	NP-183	5/16 x 18 x 1" Bolt	
2	110166987	5/16-18 Fling Top Lock	
2	H-176	Rubber Bushing 1"	
2	302703-130481	5/16 Hard Flat Washer	
1	1133008	3/8 x washer	
1		Catalog	
1		Sticker	
1		Instructions	

Checked and Packaged By

Technical questions can be answered at tech@straightlineperformance.com



Facebook @ straightlineperformanceinc
 Youtube @ straightlineperfinc
 Twitter @ straightlineperf