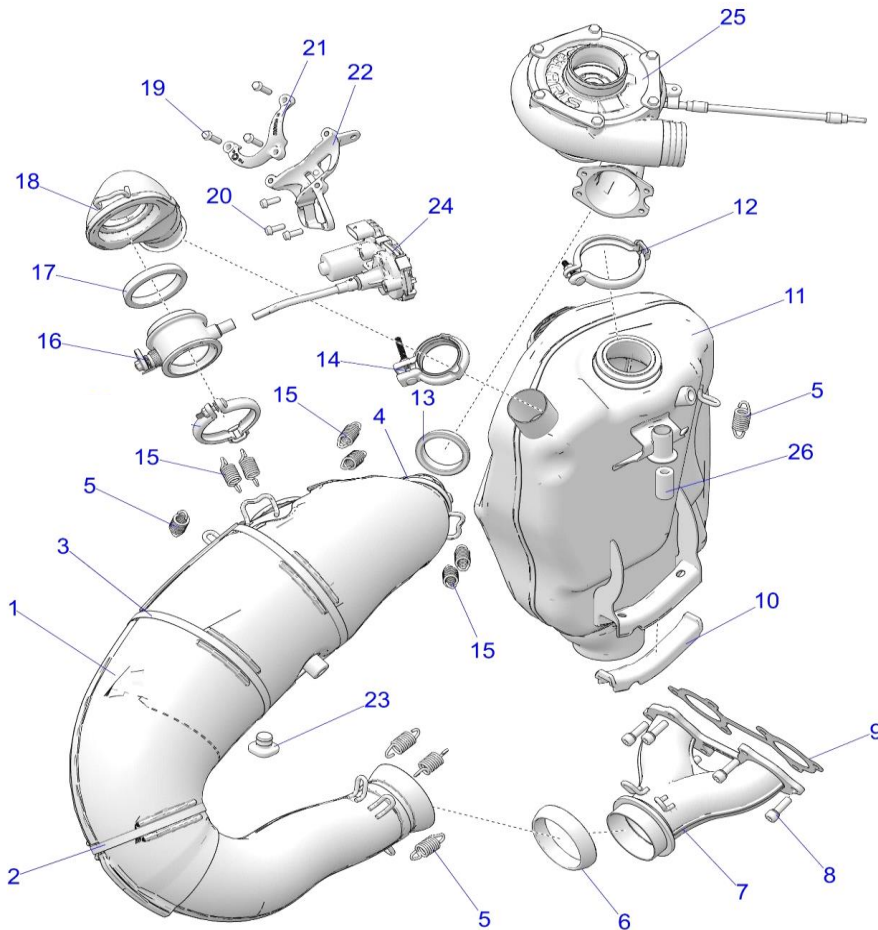




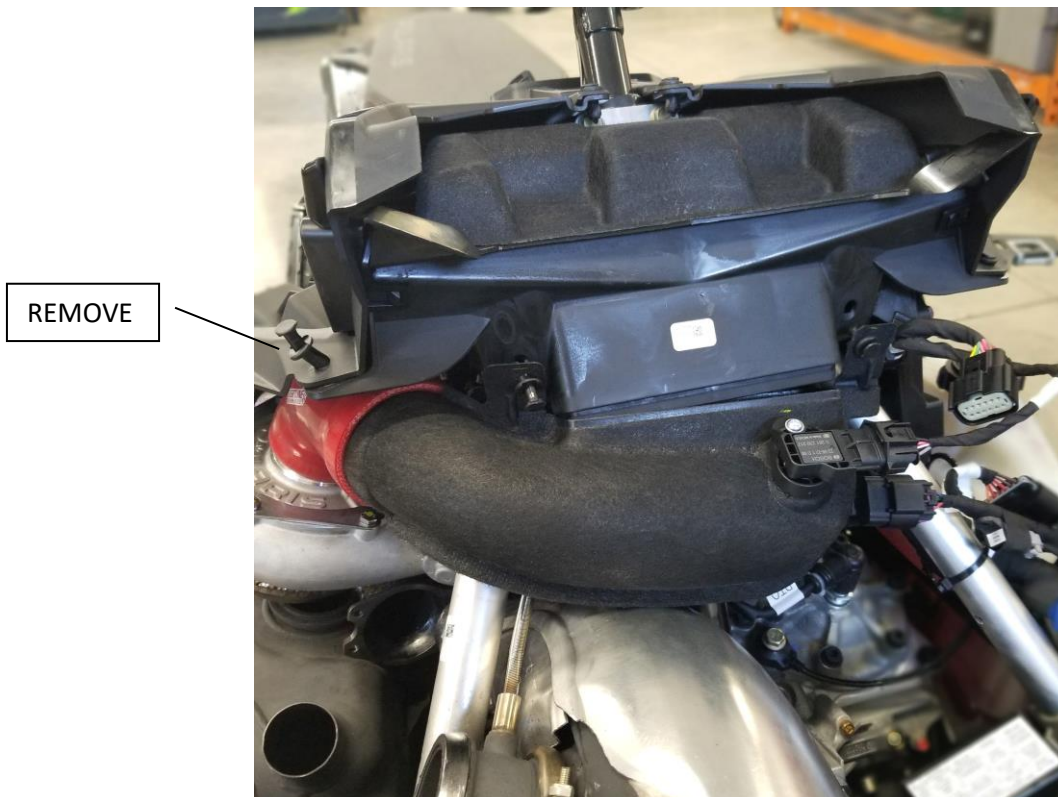
132-156 Polaris 850 Boost Lightweight Muffler Installation Instructions

- Remove side panels and hood.
- Remove 4 springs (#15) holding turbo to exhaust pipe, remove two springs (#15) holding bypass tube to muffler, remove two springs (#5) holding the muffler to the chassis. One located at rear of muffler, one located on top of muffler and are black colored.
- Remove clamp (#12) holding the turbo to the muffler.
- Remove clamp (#14) holding the bypass tube (#18) to the muffler. Gently pull the bypass tube off the muffler-be careful not to damage the 2 grafoill gaskets. Remove grafoill gasket and stainless-steel ring from muffler. The other grafoill gasket (#17) will also be reused. These pieces will be used for installation of new muffler.
- Loosen the two clamps holding the air inlet and boost tubes onto the turbo.
- Remove temp sender from muffler.



STRAIGHTLINE **PERFORMANCE**

- Remove two push pins holding the air box to the chassis. Swing the air box out of the way to the left of chassis.
- Remove one push pin near right hood hold down. This aids in clearance to move the turbo up and out of the way of the muffler.

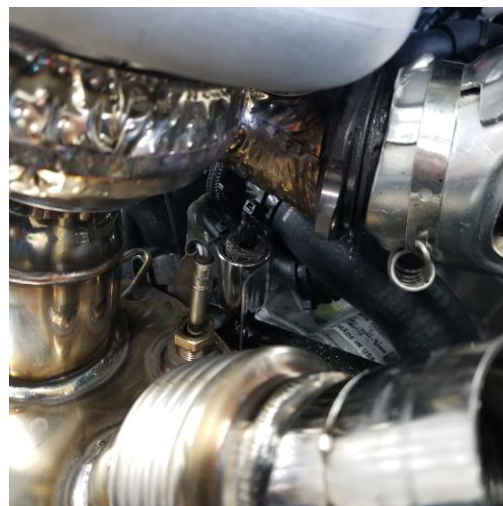


- Gently lift turbo off exhaust pipe, out of the rubber boost inlet tube, and off the muffler, moving up and out of the way to lift muffler out of chassis. Be careful not to damage or distort the fiber bushing (#26). This piece will be used on new muffler.
- Set new muffler in place, properly locating on lower mount using the rubber isolator (#10) and fiber bushing (#26).
- Install Exhaust gasket (#13) onto exhaust pipe, then lower and rotate turbo into rubber boost inlet tube, onto the exhaust pipe, and set onto muffler.
- Manipulate/align turbo onto muffler inlet. Care must be taken to align turbo and muffler connection to be sure the joint is mated, and gap is tight all the way around to avoid exhaust leaks.

STRAIGHTLINE **PERFORMANCE**



- Install clamp (#12) onto muffler/turbo joint. Tighten clamp.
- Slide ring and grafoil gasket onto muffler bypass inlet and slide bypass tube (#18) onto muffler. Swing up into place on exhaust pipe grafoil gasket (#17).
- Install clamp (#14) over ring and grafoill gasket on muffler bypass inlet.
- Install 4 clamps (#15) onto turbo/exhaust connection. Be sure to use exhaust gasket (#13).
- Install 2 springs (#15) onto exhaust bypass tube (#18) and exhaust pipe.
- Install muffler spring (#5) to top of exhaust pipe and to rear of muffler to chassis.
- Install temp sender into muffler. Carefully route wire behind muffler and up, keeping clear of recoil starter rope and hot exhaust parts.





- Install rubber boost tube to turbo/air box connection. Gently tighten clamp.
- Install air box to chassis and install two push pins.
- Install push pin on hood to dash above turbo.
- Tighten all clamps.
- Install side panels and hood.

Bill of Materials Included

Quantity	Part #	Descriptions	In Box
1	132-56	Muffler	
1		Instructions	
1		Sticker	
<u>Checked and Packaged By</u>			

Warranty

Be sure the Straightline lightweight muffler has no manufacture defects.
If the pipe has been run/used there are **no warranties** for fitment.